



Smoke Outlook for 8/09 - 8/10
Sierra-Inyo National Forest Lions Fire
 Issued at: 2018-08-09 08:13 PDT

Outlook for Sierra-Inyo National Forest

Daily AQI Forecast for Aug 09, 2018

Special Statement

An Air Quality Alert is in effect for Mono County. A Stage 2 health advisory has been issued by the Great Basin Unified Air Pollution Control District. For health advisory information go to: www.gbuapcd.org. This air quality forecast reflects Particulate Matter - not Ozone.

Fire

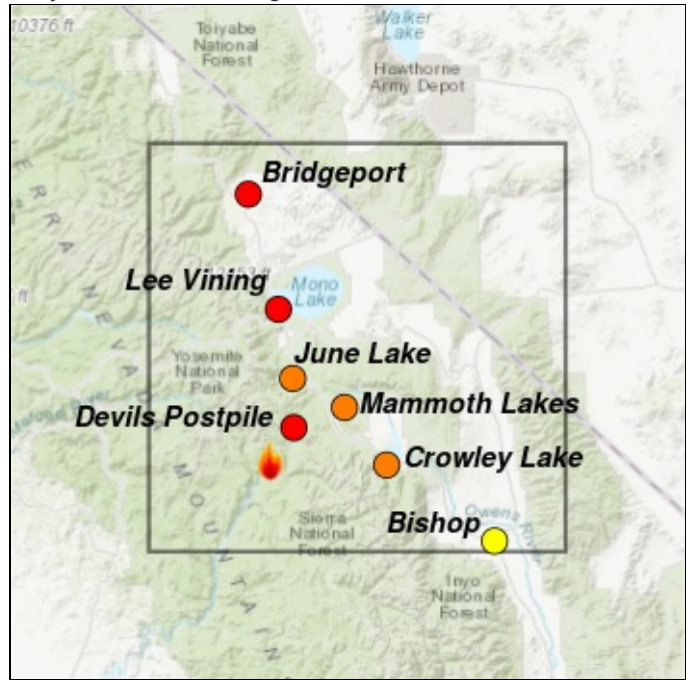
The fire is now 8,711 with 70% containment. Hot temperatures, low humidity, and unstable conditions could increase fire activity today.

Smoke

Fire activity will be moderate to high today with the hot temperatures, low humidity and southwest gusty winds. Air quality will be Moderate to USG throughout in June Lake, Mammoth Lakes, and Crowley Lake, with periods of Unhealthy air quality depending on fire behavior. Devils Postpile can expect greater smoke impacts, due to pooling of smoke in the area. USG to Unhealthy air quality can be expected north of the fire in Bridgeport and Lee Vining.

Other

Accumulated smoke impacts from several fires in California are contributing to poor air quality conditions throughout the area. This forecast is for the Lions Fire, for a regional forecast, go to: <https://wildlandfiresmoke.net/outlooks/SouthernSierra>



Station	Yesterday hourly	Wed 8/08	Forecast Comment for Today -- Thu, Aug 09	Thu 8/09	Fri 8/10
Bridgeport			USG to Unhealthy throughout the day, pooling this evening into morning.		
Lee Vining			USG to Unhealthy throughout the day, pooling this evening into morning.		
June Lake			Moderate to USG, brief periods of Unhealthy, best air quality midday.		
Devils Postpile	No hourly data		USG to Unhealthy, periods of Very Unhealthy, best air quality midday.		
Mammoth Lakes	No hourly data		Moderate to USG, brief periods of Unhealthy, best air quality midday.		
Crowley Lake	No hourly data		Moderate to USG, brief periods of Unhealthy, best air quality midday.		
Bishop			Regional haze throughout the day, Moderate to USG, best air quality midday.		

Issued 2018-08-09 08:13 PDT by Air Resource Advisor Julie Hunter; lionsfireinformation@gmail.com

Air Quality Index (AQI)	Actions to Protect Yourself
Good	None
Moderate	Unusually sensitive individuals should consider limiting prolonged or heavy exertion.
USG	People within Sensitive Groups* should reduce prolonged or heavy outdoor exertion.
Unhealthy	People within Sensitive Groups* should avoid all physical outdoor activity.
Very Unhealthy	Everyone should avoid prolonged or heavy exertion.
Hazardous	Everyone should avoid any outdoor activity.

Disclaimer: Forecasts may be wrong; use at own risk. Use caution as conditions can change quickly. See your health professional as needed. Smoke sensitive groups should take appropriate precautions.

Additional Links
[Great Basin Unified Air Pollution Control Division](http://www.gbuapcd.org) -- <http://www.gbuapcd.org>
[Mammoth Mountain Cam](https://www.mammothmountain.com/cams) -- <https://www.mammothmountain.com/cams>
[Bishop Web Cam](http://www.bishopweather.com) -- <http://www.bishopweather.com>

Issued by USFS Wildland Fire Air Quality Response Program -- www.wildlandfiresmoke.net
 Sierra-Inyo National Forest Updates -- tools.airfire.org/outlooks/Sierra-InyoNationalForest
 *Smoke and Health Info -- www.airnow.gov/index.cfm?action=smoke.index

