

# Coso Junction PM-10 SIP Status September 14, 2005



Coso Junction



0 1 2 Miles

# Background

- Designated nonattainment and classified “moderate” in 1990
- No exceedances due to sources within the planning area since 1990
- Consent decree status
  - Extension granted on 7 Jan 03
  - Current deadline is 10 Jan 06: redesignate to attainment or reclassify to “serious”

# Current Status – Coso Junction

## Two PM-10 Violations Since Jan 2002

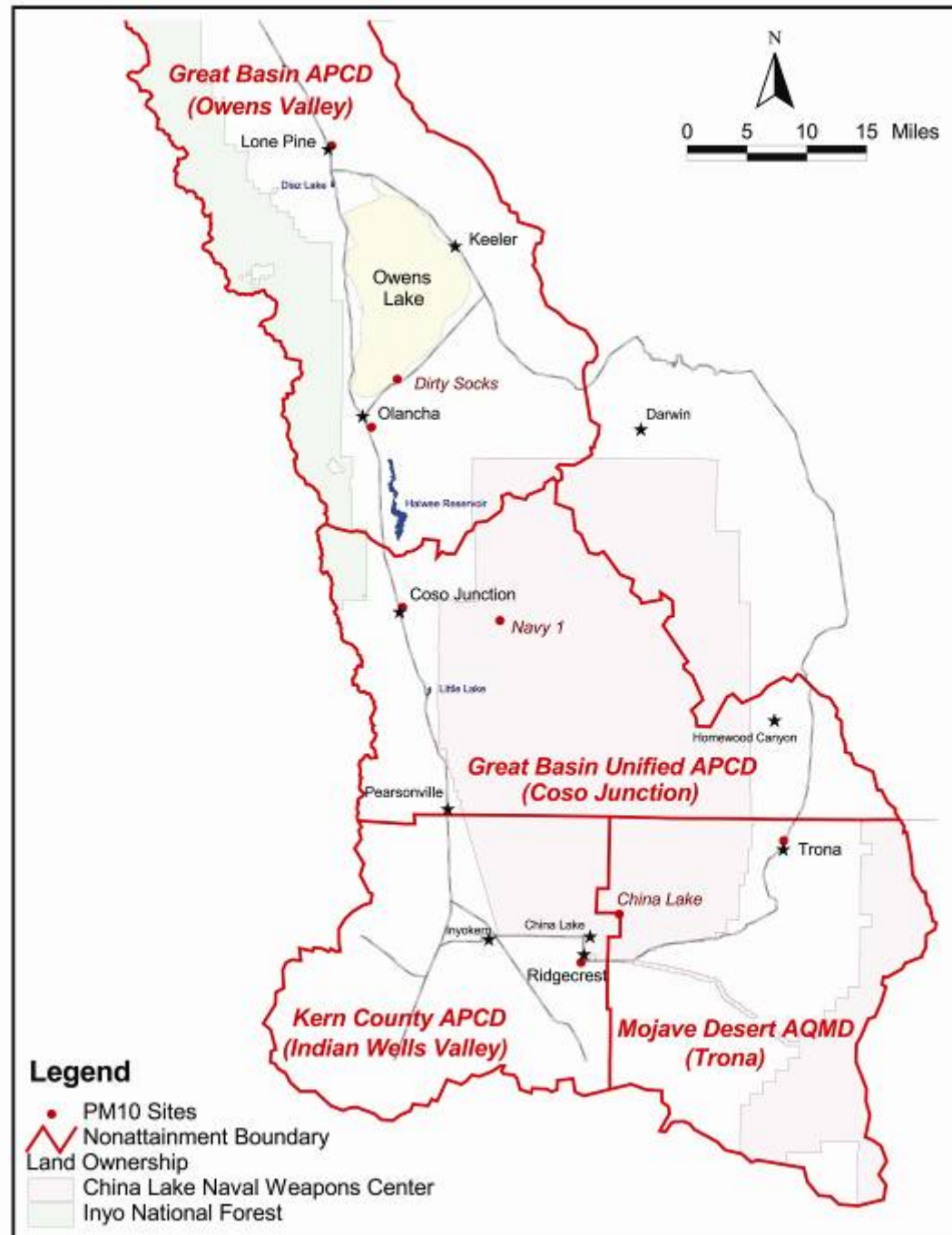
- 25 Jul 02: 175  $\mu\text{g}/\text{m}^3$  caused by McNally Wildfire located in San Joaquin Valley PM-10 Planning Area
- 2 Feb 03: 484  $\mu\text{g}/\text{m}^3$  caused by regional-scale wind blown dust from Owens Lake in Owens Valley PM-10 Planning Area

# Air Quality Violations Caused by Owens Lake Dust Storm on 2 Feb 03

Downwind Sites (PM-10 SIP Area)	Distance to Owens Lake	PM-10 ( $\mu\text{g}/\text{m}^3$ )
Dirty Socks (OV)	0 mi.	10,933
Olancha (OV)	2.5 mi.	1,062
Coso Junction (CJ)	17 mi.	484
Ridgecrest (IWV)	50 mi.	162

OV = Owens Valley, CJ = Coso Junction, IWV = Indian Wells Valley

# PM-10 Planning Areas and Monitor Sites

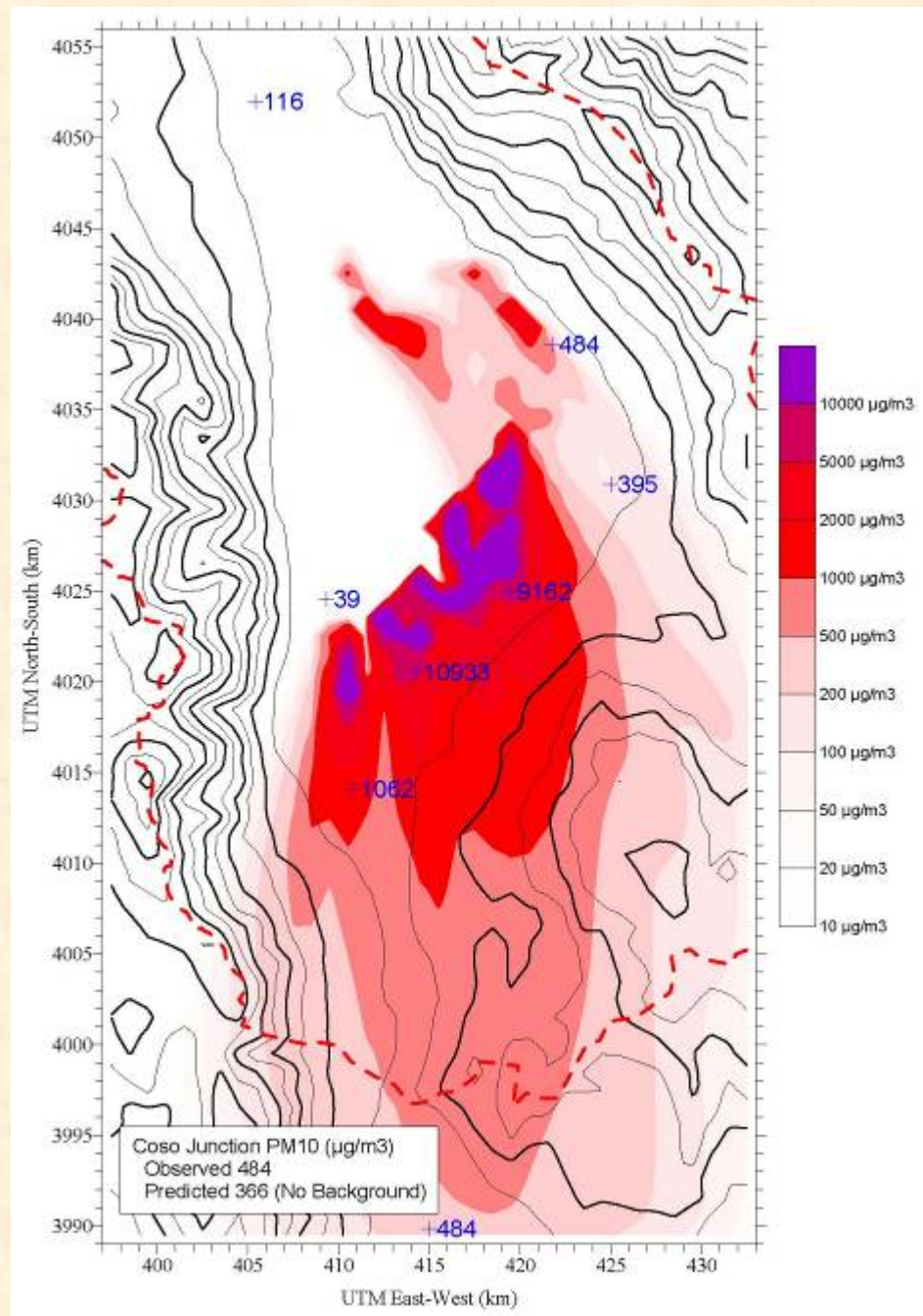


# Owens Lake Dust Event

February 2, 2003

CALPUFF Model

[To view time-lapse dust storm click here!](#)



# Coso Junction (cont)

- General trend is improving
- Four highest concentrations Jan 2002 - May 2005

	2002	2003	2004	2005 (May)
1 <sup>st</sup> Hi	175*	484**	62	97
2 <sup>nd</sup> Hi	122	118	31	62
3 <sup>rd</sup> Hi	80	38	25	41
4 <sup>th</sup> Hi	65	36	22	29

\* McNally Wildfire

\*\* Owens Lake Dust Event

# Coso Junction (cont)

- State Implementation Plan
  - Adopted by the District Nov 2004
  - Demonstrates attainment is linked to status of Owens Lake mitigation
  - District modeling shows that the highest concentration after Owens Lake dust controls are fully implemented is 25.2  $\mu\text{g}/\text{m}^3$

# The Role of Owens Lake

- Largest source of PM10 in the nation
- Dust storms are the only cause of exceedances at Coso Junction



# Current Status – Owens Lake

- 1998 SIP is EPA-approved
- Required
  - treatment of 16.5 square miles
  - Re-evaluation of control measures to verify effectiveness
  - Future SIP revision to address additional areas and potential control measures

# Owens Lake (cont)

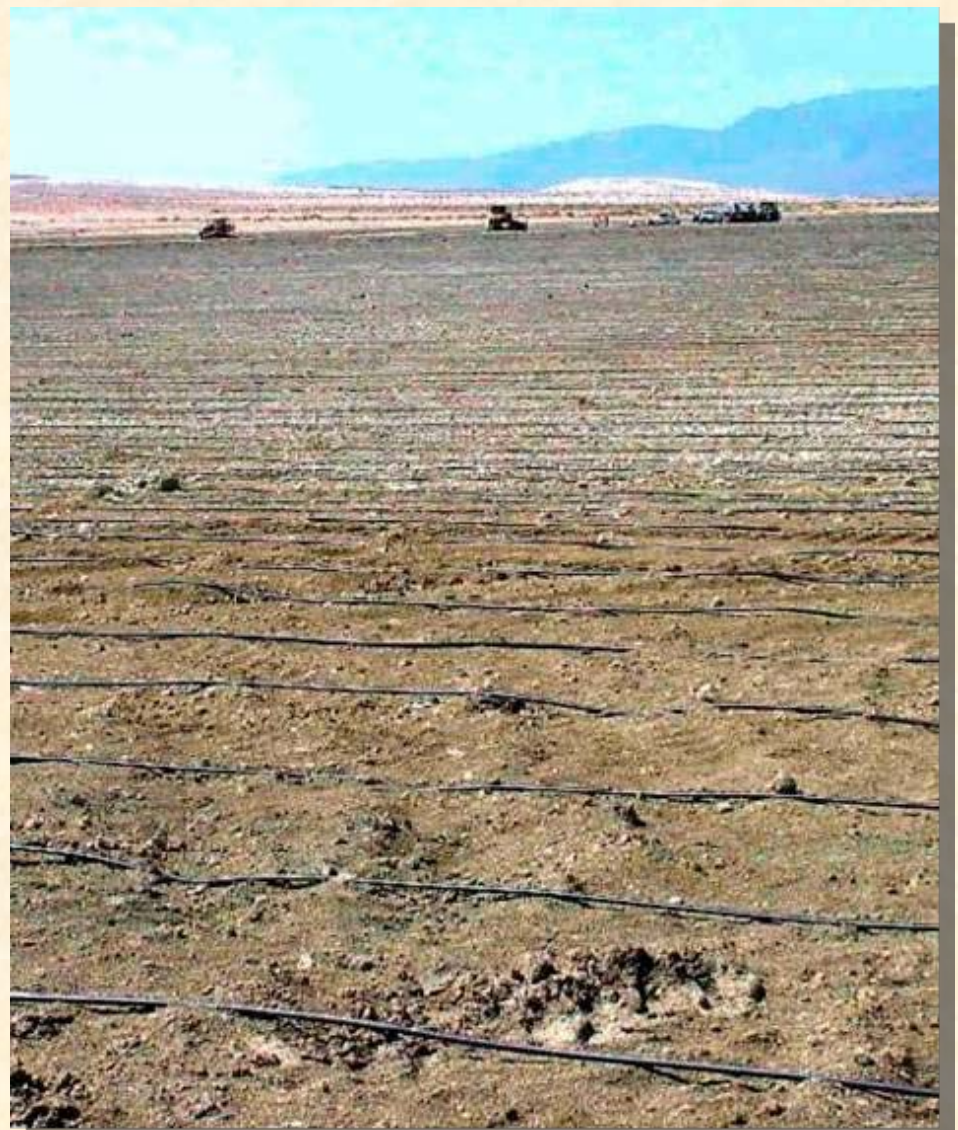
- 2003 SIP Revision
- Requires LADWP to treat
  - additional 13.3 square miles
  - plus any other areas as identified by the District

# Owens Lake (cont)

- 23.5 square miles have been treated so far
- By end of 2006:
  - Over \$500M will have been spent
  - All areas identified in 2003 SIP revision will be treated
  - Total of 29.8 square miles of lake bed will be treated.



LADWP has installed over 7,300 shallow flood bubblers...



...and 3,500 miles of drip irrigation tubing.

Progress is on schedule despite the unique challenges posed by the lake bed.



Third phase of treatment is about to begin.

# Owens Lake (cont)

- Contingency Measures
  - Contained in District Board Order
  - District APCO can issue orders to treat additional areas as needed
  - No administrative appeals available to LADWP
  - Triggered if modeling or monitoring do not show attainment at the shore line
  - Requires treatment of these areas to be completed by LADWP within 2.5-4 years of order

# Our Request

- Drop Coso Junction from the lawsuit
  - Focuses efforts on Owens Lake rather than Coso Junction

OR

- Extend consent decree deadline
  - Allows time for additional treatment of the lake bed without penalizing Coso Junction